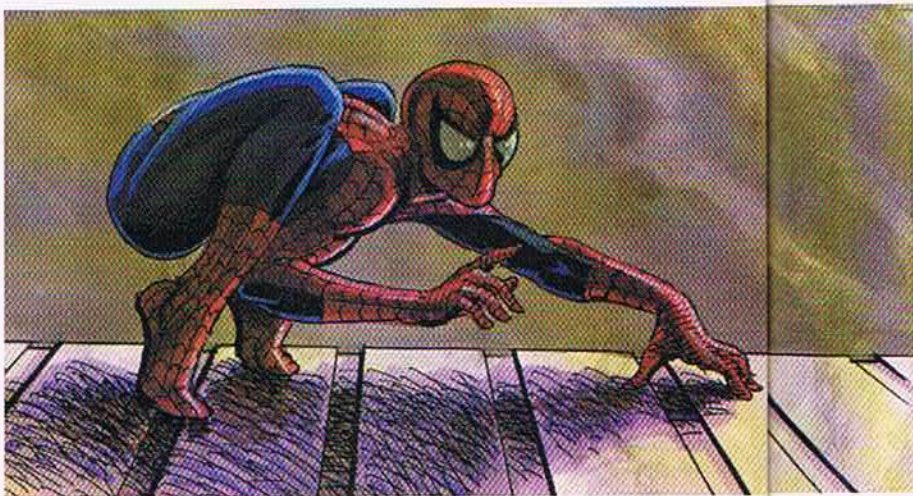


SPIDER-MAN

The other half of Linsner's *Ultimate Marvel Team-Up* is a certain wall-crawler. "This is something that I did just playing around last year," he says. "When I get tired of drawing Dawn, I'll belt out a superhero piece for fun."

Spidey is fun, but limited fun for Linsner. "Spider-Man is one character I've never wanted to do major work on, because to me, the definitive Spider-Man has already been done—the Spider-Man of [original Spidey artist] Steve Ditko."

Linsner's Spider-Man is wiry, creepy, and dark—just the way he sees Ditko's. "It's just a matter of what you want to do," Linsner remarks. "The Saturday-morning version of Spider-Man, or the original 'underground' Spider-Man. If anything, I'm just trying to walk in the footsteps of Mr. Ditko."



DAWN: DEEP BLUE

Another *Pin-Up Goddess* piece. "Sometimes things just pop into my head that are beyond words, and being an artist, I get to express them on paper," Linsner says. "I think I may have been feeling rather blue the day I drew this, and it just sprung forth from my subconscious." Anything more to it? "I don't know what the blue means beyond that, if indeed it means anything," Linsner laughs. "But I do think blue is pretty."

THE THING

Hey! Doesn't Linsner's Thing look a little like Igo, the giant "rock ape" from the "Herculoids" cartoon? "Guilty as charged," he says. "There might be a little influence there. This was done just for the pure fun of it."

